

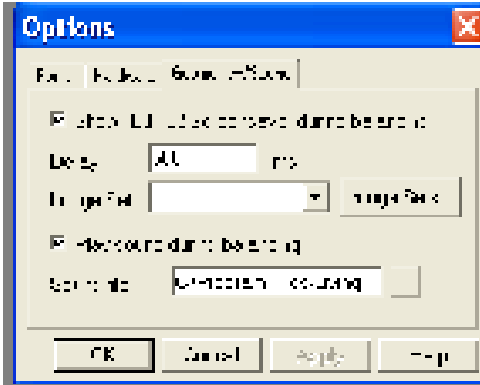
## IDF 32 Software for the SE-5 and SE-5 *plus*.

There are many new additions to the IDF32 Software for the SE-5 and SE-5 plus. These additions will allow you to work more effectively. New features include:

- ◆ Balancing multiple programs and sub programs.
- ◆ Use of geometrics, color and sound during balancing.
- ◆ Support for USB to serial adapters.
- ◆ Improved Import / Export functions.
- ◆ Extended Tunings and Tuning Descriptions.
- ◆ Improved Sessions Manager with Session Description.
- ◆ More accurate timing for balancing sessions.
- ◆ Complete Help Files.

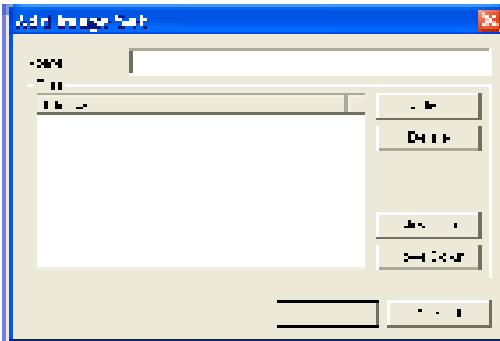
## Sound / Color/ Geometrics

To access the Sound / Color / Geometrics feature, click on the Geometrics / Sound tab. The following screen will appear.

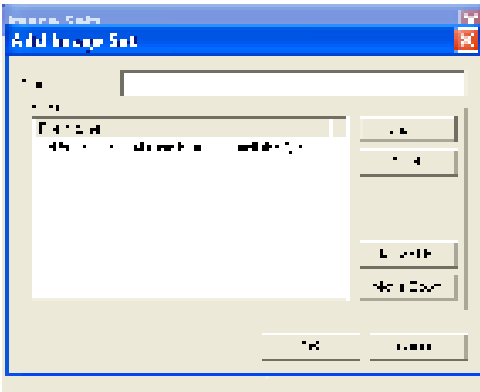


To show the Geometrics or Colors while balancing, click the small box in front of Show IDF32 Screensaver during balancing.

First you will need to choose which Geometrics or Colors you want to use while balancing. To do this, click on the **Image Sets** button. The following box will appear.



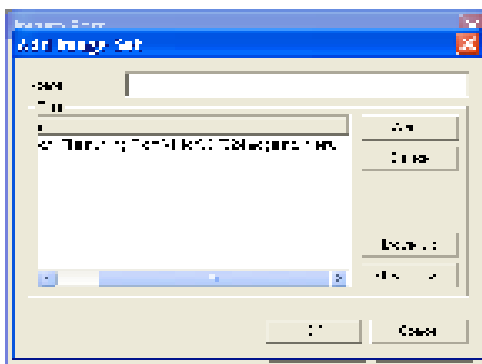
An Image set is a series of picture or colors that you want to send along with your balancing session. I would suggest that you create a set of images for each client and use the client's name for the Image set. To create your Image Set, click on the **Add** button. Then you will see the following box appear.



Click once again on the **Add** button. Your Image folder will open and you will see the following files.

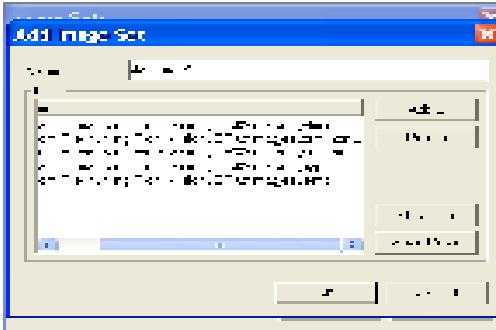


To choose the appropriate file, click on the first file (abdomen) and then begin to rub on the stick plate while using your down arrow on your computer to test which file needs to used. When you get a stick, click on the Open button. (For my example, I highlighted the first file and then kept pressing the down arrow until I felt a stick on alimentary. Then I clicked the **Open** button and the following box appeared.)

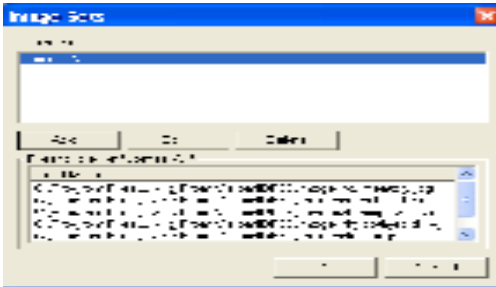


The name of the file that you chose is now displayed under **File Name**. If you want to view the entire file name, you may need to click on the ending of the File Name tab and drag it to the right to extend the field. You will then see a scroll bar across the bottom of the window and you can move it to the right and see the file name.

Repeat the above process until you have all the images that you want in the Image Set. You can arrange the order of the images by highlighting the an image name and clicking the **Move Up** or the **Move Down** button. Then give the image set a name (i.e. the client's name) and then click **OK**.



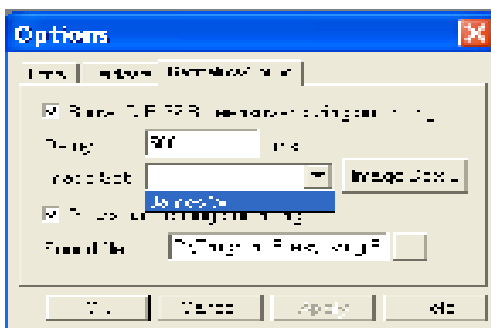
After you click **OK**, the following box will appear, now showing your first **Image Set** and its contents. (As you make more sets, they will appear together.)



You can of course add to or subtract from your Image Set by clicking the **Edit** button. To delete an Image Set, highlight the Image Set name and click the **Delete** button. When you are finished, click **OK**.

Now choose the Image Set from the drop down window

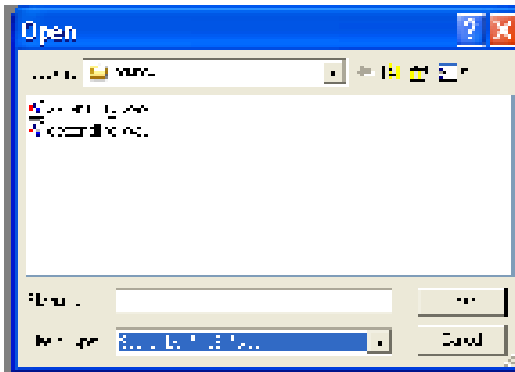
that you want to use, and click **OK**.



Your Geometries / Colors will now play while you are Balancing your session or Program. To Balance without Geometries or Colors, uncheck the box “Show I.D.F. 32 Screensaver during balancing.

## Playing Sounds

To play sounds while balancing, click the small box in front of Play sound during balancing. This will activate the Sound file list. Click the small box with three dots ... and it will open the folder where the sound files are stored.



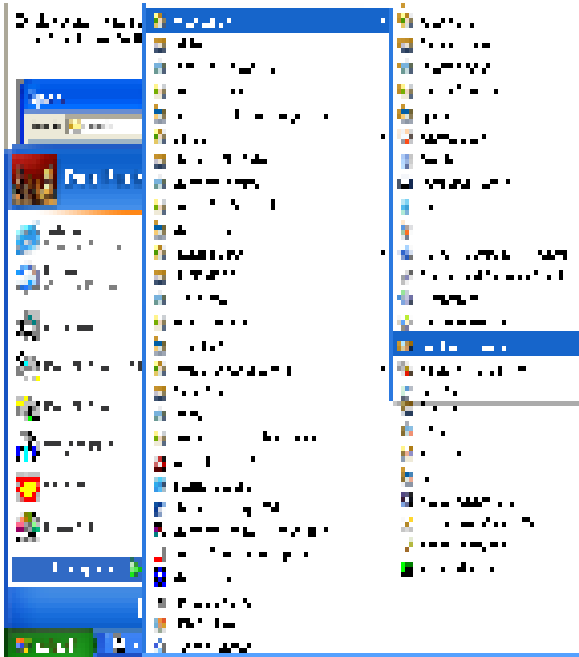
Highlight the name of the sound that you want to play and click the **Open** button.

When the dialog box closes, click the **Apply** button or **OK** if you are finished.

## Adding Geometrics or Sounds

To add your own Geometric, Color or sound files, go to the **Start** button on your task bar and highlight **All Programs**.

Go to **Accessories** and click on **Explorer**.



Click on the drive and folder that you new files are in. (i.e. A: if they are on a floppy disk, etc) Highlight the files that you want to put into your IDF32 program and then go to **Edit** and **Copy**.

Next open your C: drive and click on Program Files and then on Livingfromvision then on IDF 32 and you will see the following folders.

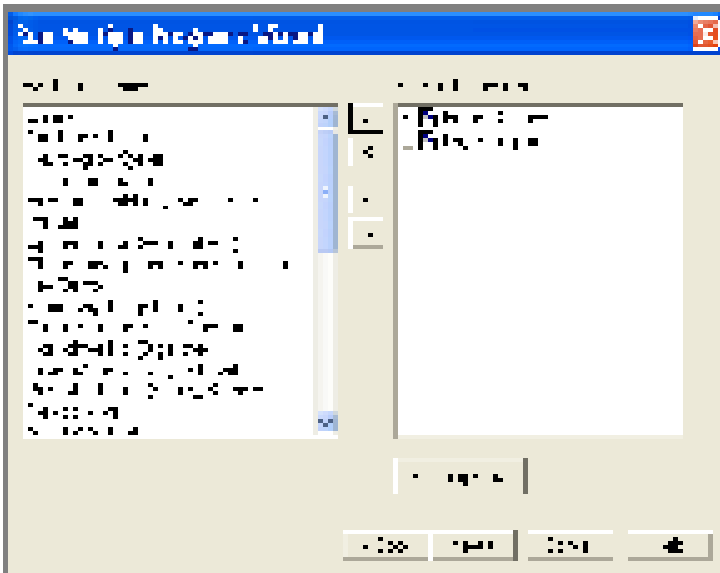




## Overview

Pre-scanned programs are now available for many experimental circumstances. For example general programs exist for experimental balancing of allergy IDFs, Chakra alignment IDFs, ecstasy IDFs, etc. You can also make your own Custom Programs for general balancing (see next section) and when you want to run one of these pre-scanned or Custom Programs, this is the procedure.

1. Open the Balancing window.
2. Click on Run Multiple Programs. When the Wizard starts, click NEXT.
3. The following window will then appear:

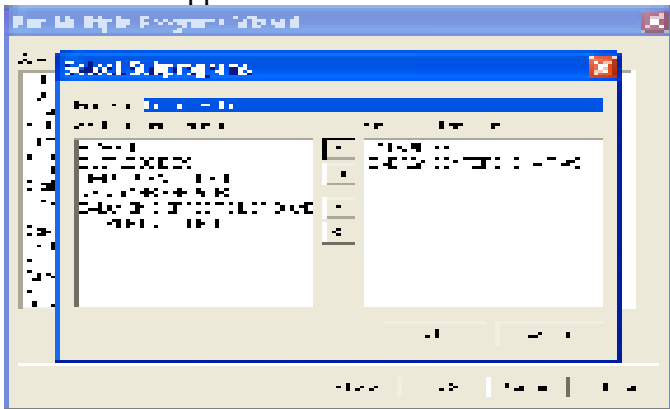


### Run Multiple Programs - Select Programs

Choose a program from the window on the left by clicking on it and then click the top small arrow in the

middle to move it to the right hand window. If you make a mistake highlight the Program that you do not want to balance and click on the small arrow pointing to the left <. If you want to move all the Programs at once, click on the double arrows >>. (NOT RECOMMENDED!!!!)

1. If you would like to only run parts of the Main Program, highlight the program that you want to modify and click on the Subprograms button and the following window will appear.



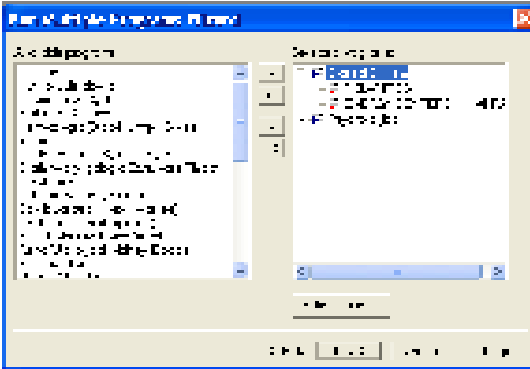
Highlight each Subprogram on the right that you DO NOT want to balance and click the small box with the arrow in it to move it over to the Available subprogram side.

(You could of course click on the bottom double arrows << and move all of the subprograms to the left window and then choose only the subprograms that you want to balance by highlighting that subprogram on the left and clicking the top arrow > to move it to the right window.)

Repeat for each Subprogram that you DO NOT want to balance, then click OK. (If you make a mistake,

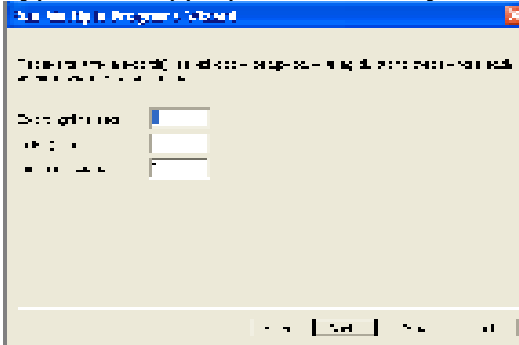
highlight the Subprogram that you want to balance and click on the small arrow pointing to the right >. If you want to move all the Subprograms at once, click on the double arrows >> or <<.) Repeat for each Main Program that you want to choose which Subprograms to run. When finished click NEXT.

This will bring you back to the Multi Program window.



To view which Subprograms you will be balancing, you can click on the small + in front of the Program name. This will expand the Program to show you the Subprograms as well. (See above.)

2. A window will open that asks you to type in the time delay for each Tuning. (See #8 of Balancing a Session.) Type in the appropriate time delay.



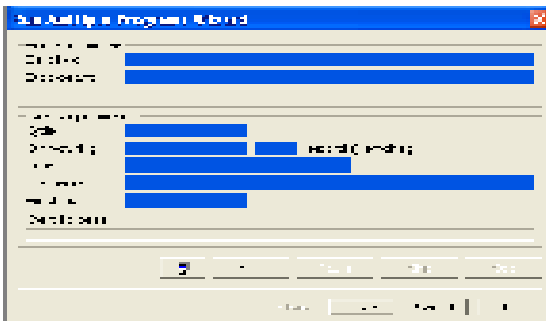
3. Set the SE-5 Amplitude to the appropriate setting. (100 for Positive Tuning programs, 0 for Negative Tuning programs, or 50 for programs with both positive and negative Tunings.)

4. Set the Measure/Balance switch on the SE-5 to the Balance position.

5. Press click on NEXT

6. Then click the START button.

The program will now present each Tuning for balancing.



## **Technical Support**

For Technical Support contact your dealer from whom you purchased the IDF Software. If your dealer cannot help you contact:

Living From Vision

Fax: 360-387-9846

Ph: 360-387-5713