

IDF Software Manual

# Intrinsic Data Field Software for the SE-5

## Software Manual



## IDF Software Manual

©2004 Living From Vision

All rights reserved. Reproduction, adaptation, or translation of this manual is prohibited without prior written permission of Living From Vision, except as allowed under copyright laws.

The programs affiliated with this manual are copyrighted and all rights are reserved. Reproduction, adaptation, reverse engineering, or translation of those programs without prior written permission is also prohibited.

Windows, Microsoft are registered trademarks of

*IDF Research is not intended for the diagnosis or treatment of physical diseases. It is considered experimental research to find out if any correlations exist between subtle fields and three dimensional reality. No claims are expressed nor implied with IDF Research.*

# IDF Software Manual

## **Table of Contents**

Installation Instructions	5
Crypto Box	5
Loading the Software	5
Setting Up Your System	7
Change Operator	7
Com Port	7
Program Info Setup	9
Computer Neutralization Tuning	10
Entering a Subject	10
Making an Analysis	11
Intake Clearances	12
New Session	13
Primary Cause	13
Main Programs	13
Sub Programs	14
Tunings	15
Reviewing a Session	16
Balancing a Session	17
Updating a Session	19
Running a Program	19
Potentizing	20

# IDF Software Manual

## **Table of Contents**

Reports	21
Printing a Session	21
Printing Mailing Labels	22
Utilities	22
Reindexing Data Base	22
Creating Custom Programs	23
Search for a Tuning	27
Convert Old Program	28
Update Files (Add On Programs)	28
View Sessions Info.	28
Accessories	29
Calculator	29
Appointment Calendar	29
Technical Support	30

## **Installation Instructions for IDF Software**

### **Installing the Crypto Box**

Before loading your software, with your computer OFF, insert your Crypto Box into your computer's printer (parallel ) port. You may need to disconnect your printer cable first and then insert the Crypto Box. Tighten the fastening screws snugly, but do not over tighten. Then plug in your printer cable into the Crypto Box and tighten the fastening screws of the printer cable into the Crypto Box. The Crypto Box is completely transparent and should not affect your printer or the normal operation of your computer.

If you have the USB type key, insert the key into an open USB slot.

***Caution: Do not loose your Cryto Box or USB Key. It is not replaceable. If lost you will need to purchase the complete program again!***

### **Installing your IDF Software**

Start your computer. Insert the IDF Software CD into your CD drive. If Auto Run is enabled on your computer, you will be asked if you would like to the Startup program or play the Instruction Video. Click on Run Startup program.

## IDF Software Manual

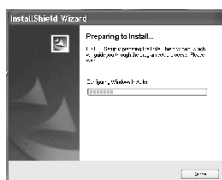


If Auto Run is not enabled on your computer click on the Start button and go to "RUN" then click on the "Browse" button.



Open your CD drive (Drive "D" on most laptops) and highlight the Setup.exe file. Then click on the OPEN button.

Then click on OK or press enter and the Install-Shield Wizard should start.



After the software has successfully loaded, you will see a icon of a Diamond with the lable I.D.F. 32 on your Desktop.

By double clicking with your mouse on the I.D.F. 32 Diamond Icon, you will begin the Intrinsic Data Field Software.



## Setup Information

First we want to set up the program with your information and the Computer Clearance code. Click on *Tools* and then *Setup Information*.

The following box should appear.



Click your mouse in the first box, First Name, and fill in your name. Use the TAB key to change boxes.

## Entering Computer Neutralization Tuning

Type in the appropriate Tuning for your computer (listed on page 30 or your SE-5 Instruction Manual), or switch your SE-5 into Scan and scan for a Tuning specific to your computer. Now click on OK to close the box and save the information

## Setting Yourself up as the Operator.

Click on *Data* and then on *Operators*. Initially the database will be empty. Click on *Record* and then

on *Add New*.

Fill in the information about yourself and then click on OK. The program is designed for multiple operators and will keep track of who did which sessions.

## **Setting up the Com Port**

Now that your program is ready to use, we need to tell it how to talk with the SE-5. Click on *Tools* and then click on *Options*. Click on the tab that says HARDWARE.

Now click on the button that says SELECT and wait for a few seconds. The program is now searching for the communication ports that you have on your computer that are available. Com 1 is usually available on a laptop and Com 2 is normally open on a PC.

Select the com port that you will use for the SE-5 and click OK. (Note: if you do not have a 9 pin serial port on your computer as some of today's laptops, you will need to get an adapter from USB to Serial. I recommend the adapter made by KEYSpan.)

Click again on OK and the window will close

Now you're ready to connect your SE-5 to the computer. Shut down your computer and turn it off. With your SE-5 off and the Sharp or PSI computer also off, plug a serial cable into the Com Port we



## IDF Software Manual

found in the Com Port search, and into the SE-5's RS232 port. Restart your computer and start the IDF 32 program.

CONGRATULATIONS!! You are now ready to use your IDF Software.

### **Entering a Subject**

First you will need to enter a subject's name etc. To do this simply click on *Data* and then on *Clients*. Now click on *Record* and then on *Add New*. Fill in the information for your client and any notes you want to make about this client and then click OK.



### **Analysis / Intake Clearances**

Next you will need to click on the *Analysis* window and then click on *Intake Clearances*. You must perform the Intake Clearances before doing a session.

## IDF Software Manual



All applications of the SE-5 will begin with what is called the Normal Start-up. This consists of first grounding out any static electricity from the body by touching a large metal object such as a metal table or metal file cabinet, the grounding screw on an electrical outlet or better yet, use a grounding mat under the SE-5 and touch the space on the mat for this purpose. Next touch the Amplitude knob on the SE-5 and then turn on the SE-5. Wait for the 'Clearing Cycle' to complete. (approx. 5 seconds.) The Clearing Cycle 'Clears' the Cell of any remaining IDF's of the last Sample.

The switches would be as follows: Measure/Balance Switch; Measure position, Normal/Scan Switch; Scan; 100/1000 Switch; 100, On/Off Switch; On. Place a Sample into the Cell. (Make sure the Sharp or PSI computer is Off.)

The cursor will be in the first box after the first Tuning, (ADDDRMVNOWAM @100). Take an amplitude reading from 100% and type in your results. Then push TAB and repeat for each of the Tunings. Measure from 100 down for each of the Tunings unless it says to measure @0. Measure from 0 up when it says @0.

## IDF Software Manual

When you are finished with the last one, press ENTER. Now we are ready to begin a Session.

### **Analysis / Session**

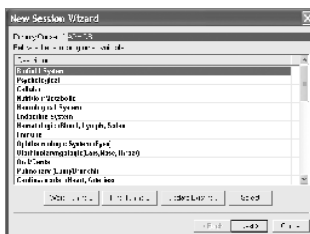
Click on *Analysis* and then on *New Session*. This will begin the New Session Wizard. Click on NEXT.

In the top drop down window you can choose the operator of this session (probably yourself). In the second drop down window you can select the Client that you want to do the analysis for.

Below the two drop down windows, you can enter a 'Search for Primary Cause ' statement into this session. For example if you were experimenting with a house plant, you might want to have a statement: 'Primary Cause of' APHIDS. This will help keep your intent focused.



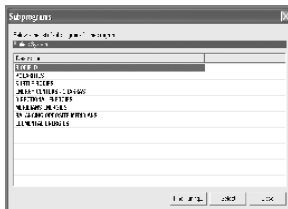
If you want to have a Primary Cause statement, click in the small box in front of the "Search for Primary Cause of" statement. If you do not want to have a Primary Cause statement click on the NEXT button. There is also a space to make a description of the session or any notes about the session you want to keep.



Now you will see the *Main Programs* window. The highlight will be on the number 1 next to the words **Biofield System**. There are two ways of proceeding at this point.

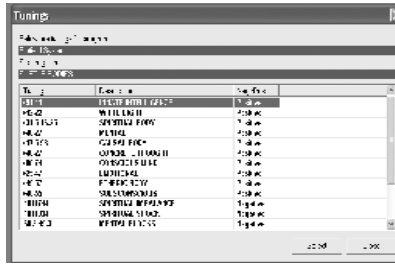
**More precise method:** Take an amplitude reading on the SE-5. If you get a reading of 85% or higher, simply press the down arrow on your computer to move the highlight down one step to number 2, **Psychological**. Then repeat the same procedure.

If you get an amplitude reading of 85% or lower, press the **space bar** on your computer or click on the **SELECT** button to access the Subprogram of the highlighted section. For example, if you pressed the space bar over #1, Biofield, the Subprograms would begin with Biofield, Polarities, Subtle Bodies, etc.



Repeat the same process of measuring each subprogram from 100%. When you find a subprogram with less than 85%, press the space bar to open the window with specific Tunings for that subpro-

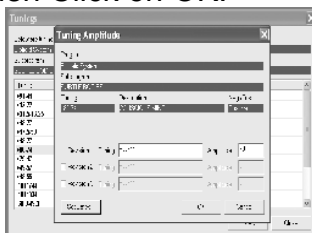
gram.



**Faster method:** With the highlight over Biofield, begin stroking the rub plate. If no stick is felt, move the highlight down with the down arrow to Psychological and repeat the process. Once a stick is felt then push the space bar to open the subprograms. Then repeat the process of stroking the plate over each subprogram. When a stick is felt, then push the **space bar** to open the window that contains the specific Tunings in that subprogram.

In either method listed above, the next step to find specific Tunings is the same. Begin with the highlight over the first listed Tuning. Begin stroking the plate with your right hand and if there is no stick, move the highlight down with the down arrow (using your left hand) and continue stroking the plate. When a stick is felt, push the **space bar**. A window will appear that allows you to measure and enter an amplitude. If the Tuning is a positive Tuning, (+ in front of the number), start with the Amplitude knob at 100% and begin rubbing the plate.

Turn the amplitude knob down until a stick is felt, then stop turning the amplitude knob. Type the amplitude reading in the space provided on your computer. Then Click on OK.



The computer has now just automatically copied the Tuning and its description into the subject's file. Each time you find a new Tuning in the above manner, the computer adds the Tuning to the subject's file, automatically building the Session for the current subject.

When the highlight will not move any further down, you are finished with that section. When this happens, push the Esc (escape) key or click on the SELECT button on your computer. This will bring you back to the subprograms. Then continue scanning down the list as before. When you get a stick on another subprogram, push the **space bar** and repeat the above process.

When you have finished all of the subprograms in that section, push esc and continue down the list of main programs. When you have finished all of the main programs, push Esc until all the windows are closed.

## Reviewing a Session

To look over all of the Tunings that you just found, or to Edit, Change or Delete Tunings or readings, click on *Analysis* , and then click on *Review Session* . A window will open that lists all of the sessions that you have done. To view the one we just finished, move the highlight down to the last one. Then click on OK or press Enter. You will then see a window that contains all of the Tunings you have found for this session.

To Edit, Change or Delete a Tuning, simply double click on the desired Tuning.

## Copy Tunings from One Session to Another

To copy Tunings from one Session to a different Session, simply click on the Tuning that you want to copy and click on the copy icon or go to *Edit* and then click on *Copy* . **(You can also copy multiple Tunings by clicking on the first Tuning you want and then hold the SHIFT key and click on the last Tuning you want to copy. This will highlight all the Tunings in between and then click on *Edit* and *Copy* . To select non-sequential Tunings, hold the CTRL key and click on the individual Tunings that you want to copy, then click on *Edit* and *Copy* .)**

Close the windows (click the small X in the upper right hand corner of the window.)

To paste them into a different Session, open a different Session by going back to *Analysis* , and then click on *Review Session* . again.

This time choose the Session that you want to paste the Tunings into by highlighting the Session and clicking OK.

Then go to *Edit* and *Paste* or click the PASTE icon.

### **Balancing a Session**

To perform a Balancing Session, follow these steps:

1. Close all windows.
2. Click on ***Balancing*** and then ***Run Session***.
3. Choose whether you want to balance the Negative Tunings, the Positive Tunings or Both. I suggest balancing the Negative Tunings first and then the Positive Tunings.
4. Click on ***Run Negative Tunings***. A window will open that shows all of the sessions you have done.
5. Choose the session that you want to balance. If you want to balance the session that we just finished, move the highlight down to the last session.
6. Click on Next when the highlight is over the session you want to balance. A window will open that allows you to enter the amount of seconds that each Tuning will remain on the screen.
7. To find how many seconds you should have for each Tuning, scan with the SE-5. To do this simply begin with the Amplitude knob at 0% and begin stroking the rub plate and increasing the amplitude.



When a stick is felt, type the amplitude reading in the space provided on your computer screen. (Enter time delay in seconds for each Tuning\_\_) Then push TAB or click in the next window.

9. Next, repeat the same process for the Time delay between the Tunings. This means how long before the next Tuning appears on the screen after the last Tuning is finished. (In other words, how long there is no Tuning being sent before the next Tuning is sent.) Type your reading into the space provided. (Enter time delay between Tunings\_\_) Press TAB or Click on the next window.

10. Repeat for the number of cycles. Before clicking NEXT, let's get the SE-5 ready for Balancing.

11. Set the Amplitude knob in the appropriate place, 100 for positive Tunings, 0 for Negative Tunings or 50 for Both Neg. and Pos. Tunings.

12. Switch the Normal/Scan switch into the Normal position on the SE-5. Switch the Measure/Balance switch into Balance position.

13. Now click NEXT or press ENTER on your computer keyboard. The SE-5 will now begin Balancing and the Computer will show each Tuning for the amount of time that you have specified and then automatically move to the next Tuning.

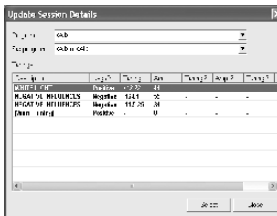
Congratulations, you have just mastered the basic skills of using the Intrinsic Data Field Software. Now we can look into some of the more advanced uses of this software.

## Updating a Session

After a Balancing Session, you may want to go back through the Tunings and re-measure the amplitude readings to see if all Tunings have balanced or you might want to add more Tunings. To do this, click on *Analysis* and then click on *Update a Session*. A window will open listing all sessions that were previously done. Chose the Session that you would like to update. If you want to Update the session we just did, move the highlight to the lowest position with the down arrow. Then click on NEXT.



You will see the Main Categories again and you can go through all the categories and add new Tunings if you want, or you can click on the UPDATE EXISTING button.



Highlight the Tuning that you want to re-measure and click on SELECT.



Click on the small box that says Revision 2. Then click on SET DATES and enter today's date for Revision 2.

Take a new amplitude reading for the Tuning and type in the amplitude. Then press Enter. Click on the next Tuning and repeat. Both the 1st and second Amplitude Reading will show on your printed report.

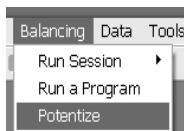
## **Run a Program**

Pre-scanned programs are now available for many experimental circumstances. For example general programs exist for experimental balancing of allergy IDFs, Chakra alignment IDFs, ecstasy IDFs, etc. You can also make your own Custom Programs for general balancing (see next section) and when you want to run one of these pre-scanned or Custom Programs, this is the procedure.

1. Open the *Balancing* window.
2. Click on *Run a Program*.
3. Chose a program from the window that appears by moving the highlight over the program with the down arrow.
4. Press the space bar when the highlight is over your chosen program.
5. A window will open that asks you to type in the time delay for each Tuning. (See #8 of *Balancing a Session*.) Type in the appropriate time delay.
6. Set the SE-5 Amplitude to the appropriate setting. (100 for Positive Tuning programs, 0 for Negative Tuning programs, or 50 for programs with both positive and negative Tunings.)
7. Set the Measure/Balance switch on the SE-5 to the Balance position.

8. Press click on NEXT then click the START button.

The program will now present each Tuning for balancing.



### **Potentizing**

To Potentize a substance with IDFs, open the *Balancing* window and then click on *Potentize*. Then follow these steps.

1. A window will open that says, Enter name and strength of Homeopathic. Type in the name or Tuning of the IDF that you want Potentized.
2. Type in the potency that you want to have or find the appropriate strength. To do this, begin with the amplitude knob at 0% and begin stroking the rub plate with the right hand. Turn the Amplitude knob clockwise until a stick is felt. Type in the amplitude reading as the strength. (ie. 6X)
3. Repeat the procedure described in #2 for the number of seconds required for potentizing or type in 11.
4. Set instrument to balance and place substance to Potentize on the plate.
6. Switch the Measure/Balance switch into the Balance position. Click the START button.

### **Reports**



## Printing your Session

Printing out your Session on paper is very simple. (Make sure your printer is switched on and is on-line, ready to print.) First click on Analysis, then on Review a session. Choose the Session that you would like to print. Click on OK.

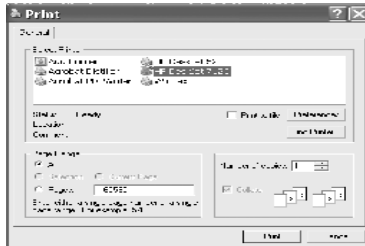
After your Session Review loads, Click on *Report*, then on *Generate Report*



After your Report is generated, click once again on *Report*, then on *Print Report*.



Next you will preview your Report. If it appears the way that you want, click the PRINT button. A Print dialog box will open allowing you to choose which printer you would like to use. Choose your printer then click the PRINT button.



## Create Programs or Add to Programs

This feature allows you to add new sections onto the Main programs. When you are finished,

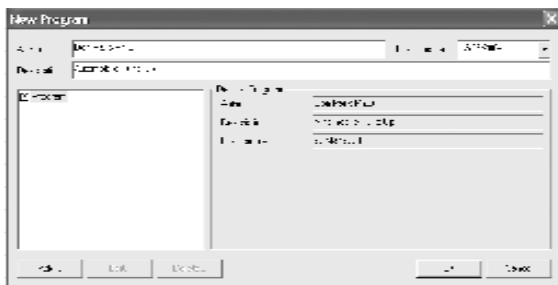
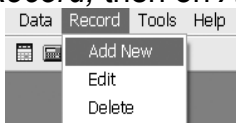
your windows will appear just like the sections 1 through 34, i.e. a Main program window, a Sub Program window, and a Tunings window. For example, you might like to make a Program for agricultural use, or balancing Automobile IDFs. Let's make one together, and you will get the idea. To Make a new Program there are three levels to make. First is the Main Program.

1. Click on *Data*, then on *Programs*.



A window will open that lists all existing Programs.

2. Next click on *Record*, then on *Add New*.



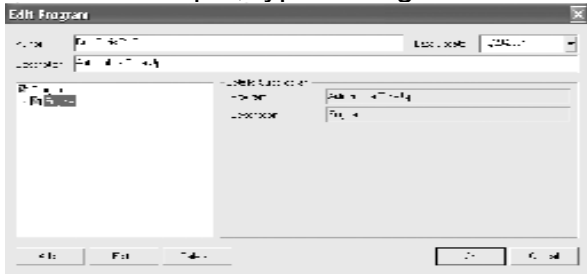
3. The above window will open. Type in your name under AUTHOR. Type in the name that you would like to call your Main Program. In our example we will call it AUTOMOBILE TUNE UP. Click OK. This Just added the Main Heading to your program list.

4. Next, scroll down to the bottom of the program list and highlight your new program. (Automobile Tune Up)

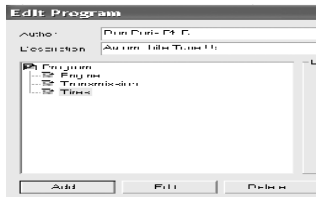
5. Next we need to Create Sub-Programs. Click once again on *Record* then on *Edit*.

6. Click the ADD button.

7. Type in the name you want to call your Sub-Program. In our example, type in Engine. Click OK.

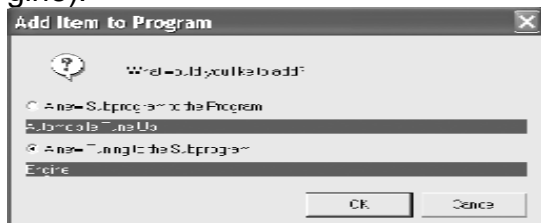


8. If you want your program to have more than one Sub Program, highlight PROGRAM on the left side of the above window and Click on the ADD button again. Type in a new name for the next Sub-Program. Click OK. You might like to make a different Sub-Program for the Transmission, Tires, Interior, Exterior, etc.



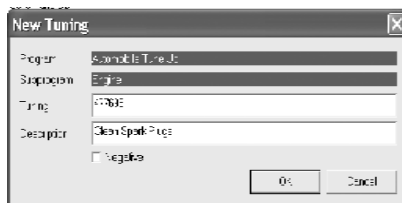
Now we are ready to enter the individual Tunings.

1. Highlight the Sub-Program where you would like place the Tunings. (In our example, click on Engine).



A window will open (shown above) that will ask you if you want to add a new Sub-Program or New Tunings to the Sub-Program. Click the small round dot before the "A New Tuning to Sub-Program". Click OK.

2. Type in the Tuning Frequency. Our first Tuning will be 477695. Type in the Tuning Description. Type in Clean Spark Plugs. This is a positive Tuning, so do not click on the negative box. If the Tuning was "Dirty Spark Plugs" for example, you would then click the small box before the word NEGATIVE. This would designate the Tuning as a Negative Tuning in the Data Base for balancing purposes.



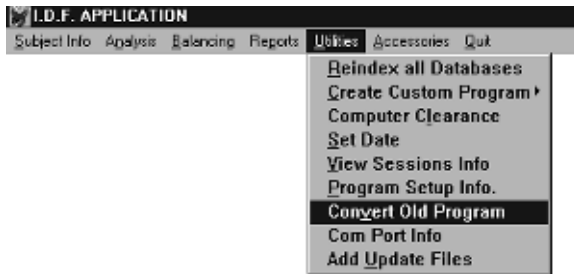
3. To add more Tunings repeat steps 1 and 2 and put a different Tuning Frequency and Tuning description in each time. For example, repeat the above procedure and this time put in 946633 for the Tuning Frequency and Optimize Timing for the Tuning Description.

You can add as many Tunings as you would like.



## **Search for a Tuning**

You can find any Tuning almost instantly by clicking first *Utilities* then *Create Custom Program* then *Search for a Tuning*. Type in the first few letters of the Tuning you would like to find and push Enter.

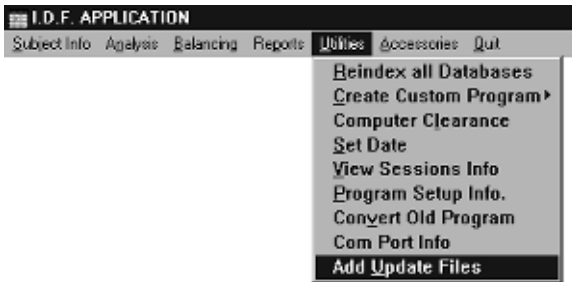


## **Convert Old Program**

This will transfer all of your Subjects names and addresses from the DOS Biofield program from Human Services Development. Your old program

## IDF Software Manual

must be in the folder C:/SE5 for this utility to function. If your program is not in this folder, make a folder on your C: drive called SE5 and copy the file Patient.dbf into this folder before running this utility. After checking to make sure your old program is in this folder, click on Utilities and then on Convert Old Program. After asking once again if you have the information in the right folder press Y for yes and the program will automatically bring in all of the names from your old program.



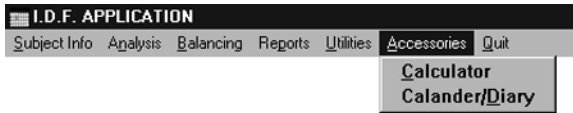
### **Add Update Files**

IF you have purchased any Add On programs from your dealer, then insert the Add On disk into your drive and click on Utilities and then Add Update Files. This will automatically load these programs and update your data base. It would be a good idea to Reindex your database (Utilities) once it has finished loading.

### **View Sessions Info**

After you have created some sessions, click on this utility. This allows you to see all of the sessions you have created and the date scanned and run, etc.

# IDF Software Manual

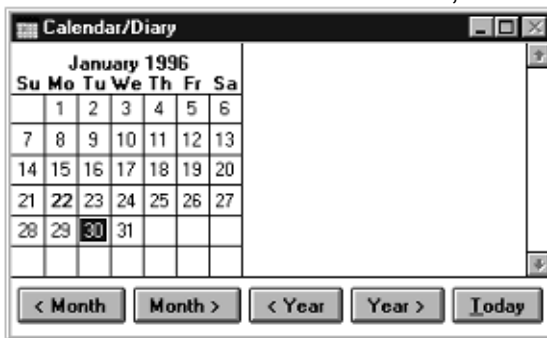


## Accessories



## Calculator

Works like a normal calculator. Use your mouse and click on the numbers and the + - , etc.



## Calendar/Diary

Select the Month / Day/ and Year by clicking on the appropriate button. Click on the message pad area with your mouse and type in a note or message. It will automatically save this information. When you want to look up this message, simple click on that date once again.

**Technical Support**

For Technical Support contact your dealer from whom you purchased the IDF Software. If your dealer cannot help you contact:

Living From Vision

Fax: 360-387-9846

Ph: 360-387-5713

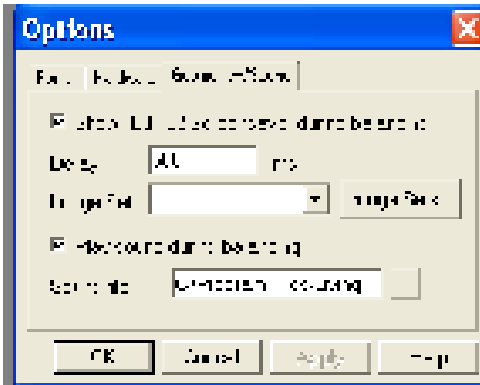
## IDF 32 Software for the SE-5 and SE-5 *plus*.

There are many new additions to the IDF32 Software for the SE-5 and SE-5 plus. These additions will allow you to work more effectively. New features include:

- ◆ Balancing multiple programs and sub programs.
- ◆ Use of geometrics, color and sound during balancing.
- ◆ Support for USB to serial adapters.
- ◆ Improved Import / Export functions.
- ◆ Extended Tunings and Tuning Descriptions.
- ◆ Improved Sessions Manager with Session Description.
- ◆ More accurate timing for balancing sessions.
- ◆ Complete Help Files.

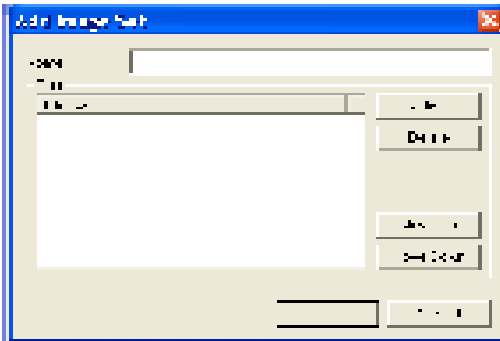
## Sound / Color/ Geometrics

To access the Sound / Color / Geometrics feature, click on the Geometrics / Sound tab. The following screen will appear.

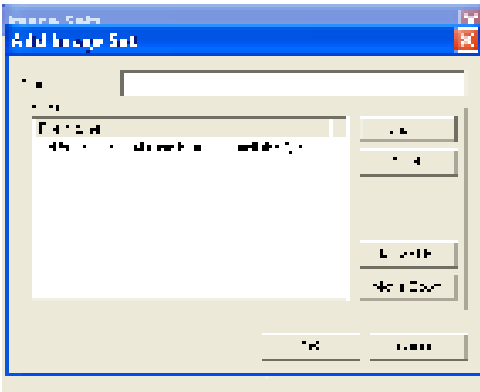


To show the Geometrics or Colors while balancing, click the small box in front of Show IDF32 Screensaver during balancing.

First you will need to choose which Geometrics or Colors you want to use while balancing. To do this, click on the **Image Sets** button. The following box will appear.



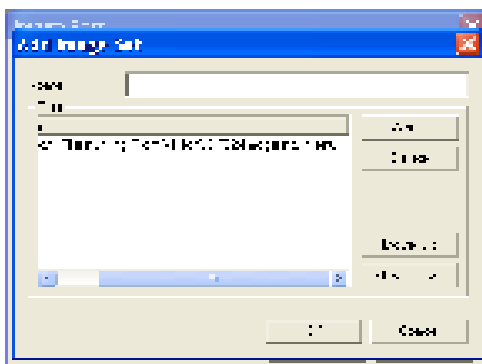
An Image set is a series of picture or colors that you want to send along with your balancing session. I would suggest that you create a set of images for each client and use the client's name for the Image set. To create your Image Set, click on the **Add** button. Then you will see the following box appear.



Click once again on the **Add** button. Your Image folder will open and you will see the following files.



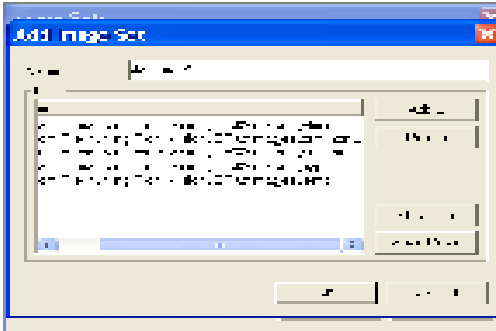
To choose the appropriate file, click on the first file (abdomen) and then begin to rub on the stick plate while using your down arrow on your computer to test which file needs to used. When you get a stick, click on the Open button. (For my example, I highlighted the first file and then kept pressing the down arrow until I felt a stick on alimentary. Then I clicked the **Open** button and the following box appeared.)



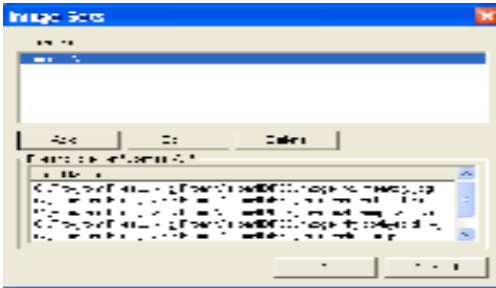
The name of the file that you chose is now displayed under **File Name**. If you want to view the entire file name, you may need to click on the ending of the File Name tab and drag it to the right to extend the field. You will then see a scroll bar across the bottom of the window and you can move it to the right and see the file name.



Repeat the above process until you have all the images that you want in the Image Set. You can arrange the order of the images by highlighting the an image name and clicking the **Move Up** or the **Move Down** button. Then give the image set a name (i.e. the client's name) and then click **OK**.



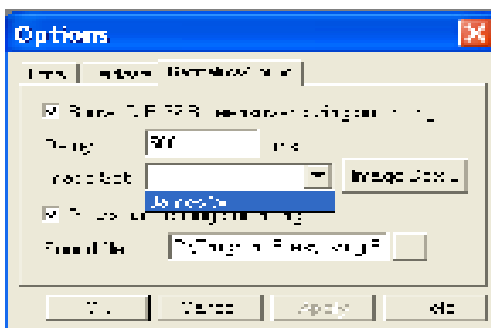
After you click **OK**, the following box will appear, now showing your first **Image Set** and its contents. (As you make more sets, they will appear together.)



You can of course add to or subtract from your Image Set by clicking the **Edit** button. To delete an Image Set, highlight the Image Set name and click the **Delete** button. When you are finished, click **OK**.

Now choose the Image Set from the drop down window

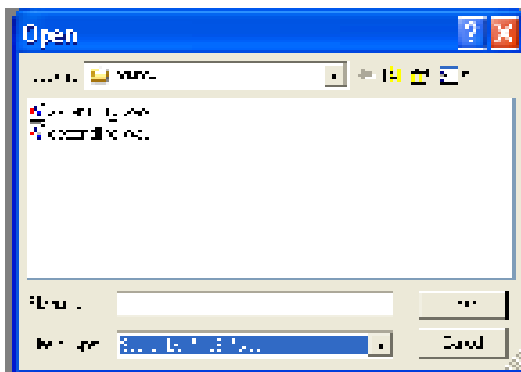
that you want to use, and click **OK**.



Your Geometries / Colors will now play while you are Balancing your session or Program. To Balance without Geometries or Colors, uncheck the box “Show I.D.F. 32 Screensaver during balancing.

## Playing Sounds

To play sounds while balancing, click the small box in front of Play sound during balancing. This will activate the Sound file list. Click the small box with three dots ... and it will open the folder where the sound files are stored.



Highlight the name of the sound that you want to play and click the **Open** button.

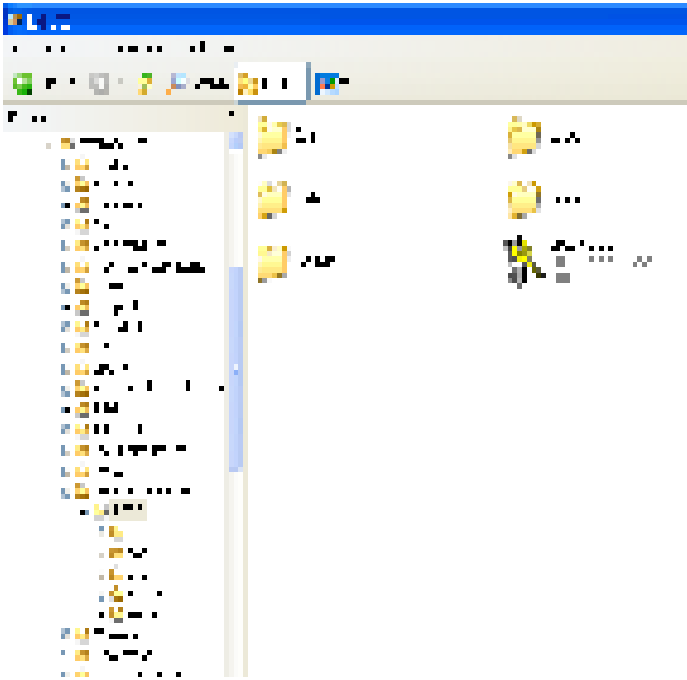
When the dialog box closes, click the **Apply** button or **OK** if you are finished.

## Adding Geometrics or Sounds

To add your own Geometric, Color or sound files, go to the **Start** button on your task bar and highlight **All Programs**.

Go to **Accessories** and click on **Explorer**.





If you are adding Sounds, open the Sounds folder and then go to Edit and Paste. The files will now be copied into you sound folder and will be ready to use in your IDF32 program.

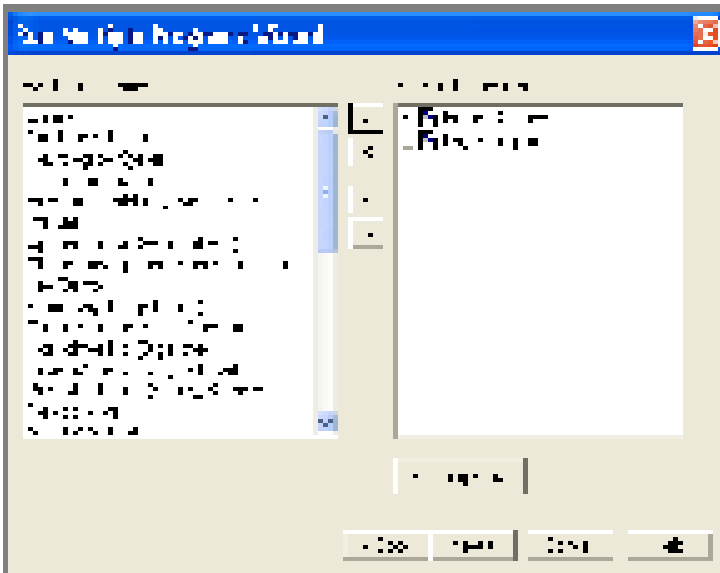
If you are adding Colors, open the Colors folder and then go to Edit and Paste. The files will now be copied into you sound folder and will be ready to use in your IDF32 program.

If you are adding Images, open the Images folder and then go to Edit and Paste. The files will now be copied into you sound folder and will be ready to use in your IDF32 program.

## Overview

Pre-scanned programs are now available for many experimental circumstances. For example general programs exist for experimental balancing of allergy IDFs, Chakra alignment IDFs, ecstasy IDFs, etc. You can also make your own Custom Programs for general balancing (see next section) and when you want to run one of these pre-scanned or Custom Programs, this is the procedure.

1. Open the Balancing window.
2. Click on Run Multiple Programs. When the Wizard starts, click NEXT.
3. The following window will then appear:

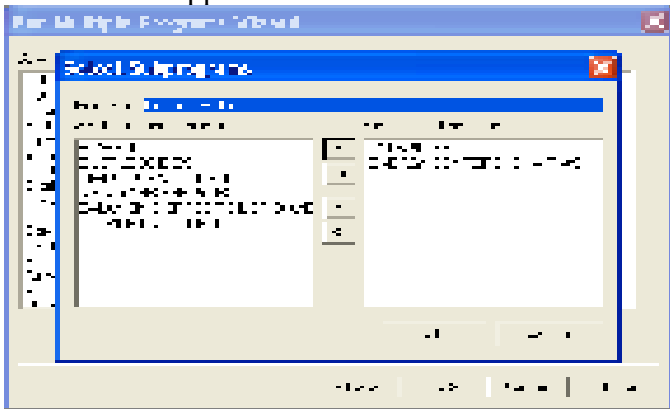


### Run Multiple Programs - Select Programs

Choose a program from the window on the left by clicking on it and then click the top small arrow in the

middle to move it to the right hand window. If you make a mistake highlight the Program that you do not want to balance and click on the small arrow pointing to the left <. If you want to move all the Programs at once, click on the double arrows >>. (NOT RECOMMENDED!!!!)

1. If you would like to only run parts of the Main Program, highlight the program that you want to modify and click on the Subprograms button and the following window will appear.



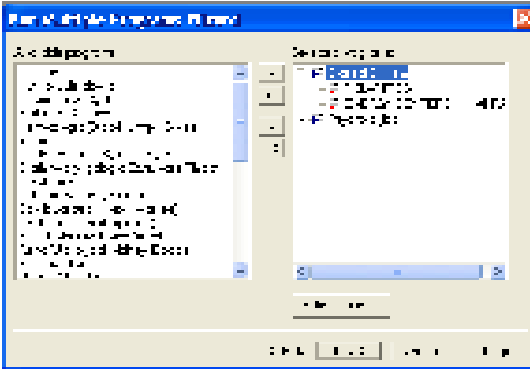
Highlight each Subprogram on the right that you DO NOT want to balance and click the small box with the arrow in it to move it over to the Available subprogram side.

(You could of course click on the bottom double arrows << and move all of the subprograms to the left window and then choose only the subprograms that you want to balance by highlighting that subprogram on the left and clicking the top arrow > to move it to the right window.)

Repeat for each Subprogram that you DO NOT want to balance, then click OK. (If you make a mistake,

highlight the Subprogram that you want to balance and click on the small arrow pointing to the right >. If you want to move all the Subprograms at once, click on the double arrows >> or <<.) Repeat for each Main Program that you want to choose which Subprograms to run. When finished click NEXT.

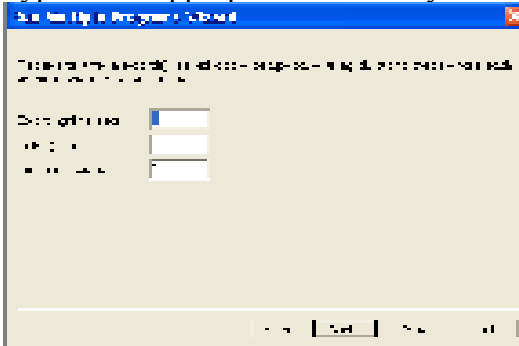
This will bring you back to the Multi Program window.



To view which Subprograms you will be balancing, you can click on the small + in front of the Program name. This will expand the Program to show you the Subprograms as well. (See above.)



2. A window will open that asks you to type in the time delay for each Tuning. (See #8 of Balancing a Session.) Type in the appropriate time delay.



3. Set the SE-5 Amplitude to the appropriate setting. (100 for Positive Tuning programs, 0 for Negative Tuning programs, or 50 for programs with both positive and negative Tunings.)

4. Set the Measure/Balance switch on the SE-5 to the Balance position.

5. Press click on NEXT

6. Then click the START button.

The program will now present each Tuning for balancing.



## **Technical Support**

For Technical Support contact your dealer from whom you purchased the IDF Software. If your dealer cannot help you contact:

Living From Vision

Fax: 360-387-9846

Ph: 360-387-5713